




TRAFx DataNet Quick Guide



DataNet is comprehensive software to view, analyze, manage and present your TRAFx data. It is an essential part of your TRAFx counting system, and of a successful, efficient and effective counting project. Bottom line: it saves you time. DataNet reflects a decade of software design, development and refinement. Over a thousand organizations use it.


DataNet's highlights include:

- Comprehensive yet very easy to use
- Quickly generate totals, charts, reports, etc
- Makes data management simple
- Promotes "best practice"
- A multi-year DataNet plan for five users is included as part of your system package
- **Premium-level Tech Support** for your counters, docks, etc. is bundled with DataNet 
- Web-based (nothing to install or maintain)
- Login to your secure account from anywhere

How does DataNet fit in? After you have retrieved data from counters in the field, and you are back in your office, you upload the data file (e.g., Shuttle file) from your PC to DataNet.

Here is how to get started:

1 First, **learn** more about DataNet, using this guide and the online DataNet demo.

2 Second, **activate** your organization's subscription plan (next page). 

1 Demo

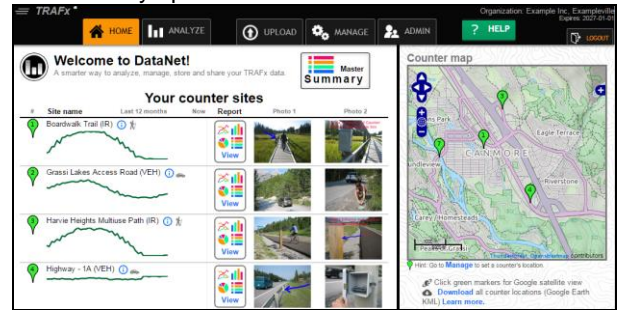
Go to www.trafx.net/datanet/demo, log in to the DataNet demo, and click along with this guide.

Each DataNet account allows two user types:

- (1) **Administrators:** can do everything (upload data, create sites, delete data, add other users, etc.).
- (2) **Viewers:** can generate totals, charts, reports, etc., but cannot add, delete or change things (upload data, delete data, remove other users, etc.).

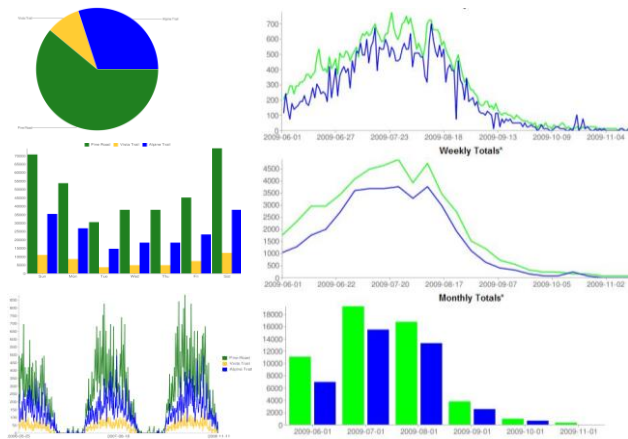
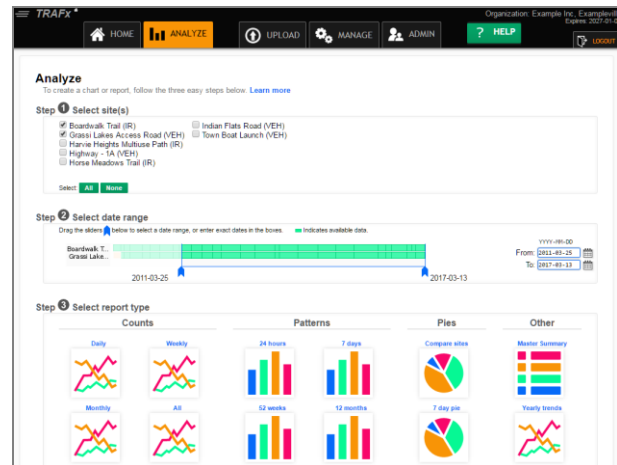
For this demo, you are logged in as a **Viewer**. Find **HOME** and **ANALYZE**. All users (Administrators and Viewers) will frequently use these.

HOME – Provides an overview: counter sites, reports, photos, master summary, a map, etc. When you upload new data, things are automatically updated.



Explore by clicking around: the icons, reports, photos, map markers, etc. The single-click, instant **Master Summary** (monthly rollup) is a favorite.

ANALYZE – It is here you generate charts (i.e., graphs), reports, and totals, and, if desired, export them and their source data. Follow the three easy steps: select site, date range, and report type.

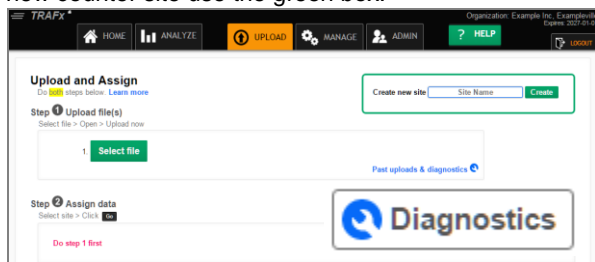


For practice, create five to seven different reports. To export to Excel, just click on the Excel icon.



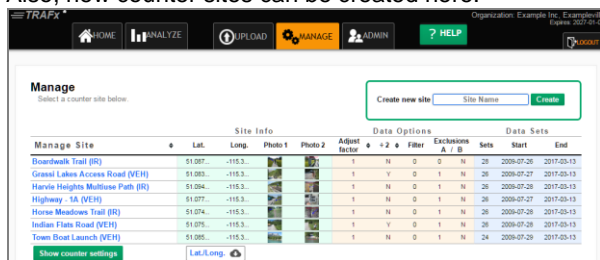
The next three menu items (UPLOAD, MANAGE and ADMIN) are used by Administrators. As a Viewer, you can “see” but you cannot “do”.

UPLOAD – This page has two steps. First, you upload a file (e.g., Shuttle File), and then you assign its data to specific counter sites. To create a new counter site use the green box.



There is also a powerful file diagnostic tool to examine uploaded data for possible problems.

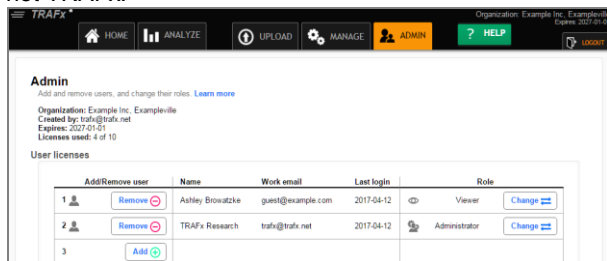
MANAGE – This is where you manage your counter sites and their associated information and settings (name, location, photos, data files, etc.). Also, new counter sites can be created here.



Click a site to manage it. You can manage:

1. Site Info (name, location, photos, etc.)
2. Data Options (adjustments, divide by 2, etc.)
3. Data Sets (move, remove, export)

ADMIN – This is where an Administrator can add (and remove) other users. Administrators are responsible for adding (or removing) other users, not TRAFx.



A new user can be added either as an **Administrator**, or a **Viewer**. Just follow the prompts. You can have multiple Administrators and multiple Viewers---this is up to you and your organization. As mentioned, Administrators have full privileges, whereas Viewers have fewer privileges.

The quick tour is now finished. For comprehensive information see DataNet’s Manual.



Important: Although TRAFx backs up your DataNet data daily, store all your original data files in a safe place.

2 Activate

A TRAFx System Package includes a pre-paid multi-year plan for five DataNet users. DataNet’s activation code sticker is located below, in the original hardcopy manual that shipped with your TRAFx System Package.



If you cannot find your original manual and/or activation code, email us proof of purchase, through our Support Hub at www.trafx.net/support

Activation only needs to be done once by one person in your organization. That person automatically becomes an **Administrator** and can invite (add) other users, via DataNet’s **ADMIN** tab.

DataNet’s start-date was your system package’s ship date so there is no advantage to delaying activation. Also, by activating DataNet you enjoy **Premium-level Support** (see below). Additionally, equipment tips and reminders are available in DataNet.

To activate (i.e., unlock) the plan, please go to www.trafx.net/datanet/activate, enter the above activation code and follow the online instructions. Here is the overall process:

Enter activation code and your email > email verification occurs > create your organization’s DataNet account > register and read agreement > use DataNet

DataNet includes five DataNet user licenses. Each user (i.e., person) requires a license; email/password sharing is not allowed.

Premium-level technical support

DataNet users enjoy premium-level technical support (priority email response, and support by phone) for all their TRAFx equipment (counters, dock, DataNet, etc.), with their Premium Support ID. This ID is displayed in the upper right corner of DataNet, upon log in. Have it handy when contacting us.



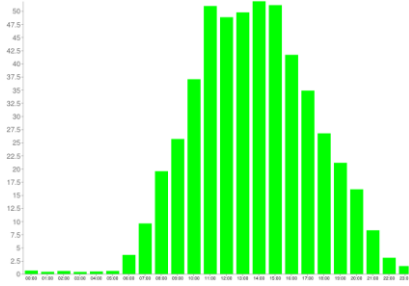
All technical support begins at our **Support Hub** at www.trafx.net/support



DataNet Gallery

What can DataNet do? Below are just a few examples that can be created instantly.

Hours



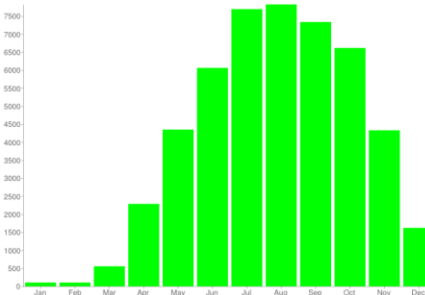
Days



Weeks



Months



Monthly Totals Table (Master Summary)

Year	Site	Jan	Feb	Mar	Apr	May	Jun	Jul	Aug	Sep	Oct	Nov	Dec	AADT†	Days with data	Totals
2010	Boardwalk Trail (IR)	32	0	14	215	810	1,051	1,332	1,356	1,252	1,131	638	235	22,099	365	8,066
	Grassi Lakes Access Road (VEH)Ⓛ	337	350	507	611	810	837	929	933	754	589	432	361	20,411	365	7,450
	Harvie Heights Multiuse Path (IR)	139	105	600	2,269	4,351	5,877	7,486	7,746	7,362	6,574	4,321	1,637	132,786	365	48,467
	Highway - 1A (VEH)	29,869	27,335	30,668	29,759	29,886	29,590	31,231	31,948	30,139	29,746	29,615	30,630	987,441	365	360,416
	Horse Meadows Trail (IR)	0	0	30	435	1,178	1,528	1,690	1,816	1,624	1,481	928	288	30,126	365	10,996
	Indian Flats Road (VEH)Ⓛ	2,737	2,737	3,219	3,186	3,295	3,291	3,568	3,671	3,485	3,388	3,014	2,714	104,945	365	38,305
2011	Boardwalk Trail (IR)	34	0	17	245	741	1,064	1,387	1,286	1,255	1,121	634	243	21,992	365	8,027
	Grassi Lakes Access Road (VEH)Ⓛ	337	348	499	632	781	837	959	911	752	595	428	364	20,392	365	7,443
	Harvie Heights Multiuse Path (IR)	115	103	555	2,286	4,348	6,060	7,691	7,821	7,333	6,612	4,328	1,621	133,899	365	48,873
	Highway - 1A (VEH)	29,839	27,283	30,772	28,916	30,169	29,396	30,949	32,451	30,184	29,755	29,464	30,331	984,956	365	359,509
	Horse Meadows Trail (IR)	0	0	45	463	1,185	1,478	1,794	1,772	1,683	1,517	969	302	30,707	365	11,208
	Indian Flats Road (VEH)Ⓛ	2,583	2,596	3,064	3,030	3,111	3,119	3,390	3,473	3,267	3,217	2,855	2,560	99,356	365	36,265
2012	Boardwalk Trail (IR)	16	0	16	181	586	979	1,104	1,155	1,358*				17,008	248	6,225**
	Grassi Lakes Access Road (VEH)Ⓛ	271	316	455	552	679	753	817	800	728*				19,113	248	6,995**
	Harvie Heights Multiuse Path (IR)	86	79	526	2,152	4,012	5,605	7,307	7,310	7,185*				113,044	248	41,374**
	Highway - 1A (VEH)	26,729	25,393	26,755	25,627	27,165	26,322	27,670	28,803	24,900*				878,161	248	321,407**
	Horse Meadows Trail (IR)	0	0	32	414	1,123	1,428	1,555	1,708	2,048*				26,343	248	9,641**
	Indian Flats Road (VEH)Ⓛ	2,423	2,512	2,864	2,850	2,957	2,941	3,218	3,274	3,173*				94,605	248	34,625**

Compare multiple counters or different days of the week

