




TRAFx DataNet Quick Guide

DataNet is a comprehensive web-based solution to view, analyze, manage and present your TRAFx data. It is an essential part of your TRAFx counting system, and of a successful, efficient and effective counting project. Bottom line: it saves you time. DataNet reflects over a decade of design, development and refinement. Over a thousand organizations use it.




DataNet's highlights include:

- Comprehensive yet very easy to use
- Quickly generate totals, charts, reports, etc
- Makes data management simple
- Promotes "best practice"
- A multi-year DataNet plan for five users is included as part of your system package
- **Premium-level Tech Support** for your counters, docks, etc. is bundled with DataNet 
- Web-based (nothing to install or maintain)
- Login to your secure account from anywhere

How does DataNet fit in? After you have retrieved data from counters in the field, and you are back in your office, you upload the data file (e.g., Shuttle file) from your PC to DataNet.

Here is how to get started:

- 1** First, **learn** more about DataNet, using this guide and the online DataNet demo.
- 2** Second, **activate** your organization's subscription plan (next page). 

1 Demo

Go to trafx.net/datanet/demo, log in to the DataNet demo, and click along with this guide.

Each DataNet account allows two user types:



(1) **Administrators:** can do everything (upload data, create sites, delete data, add other users, etc.).

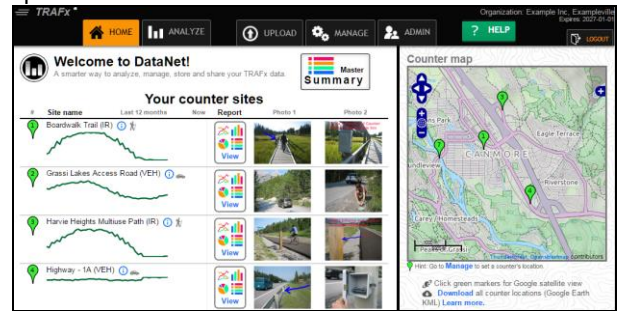


(2) **Viewers:** can generate totals, charts, reports, etc., but cannot add, delete or change things (upload data, delete data, remove other users, etc.).

For this demo, you are logged in as a **Viewer**. Find **HOME** and **ANALYZE**. All users (Administrators and Viewers) will frequently use these.

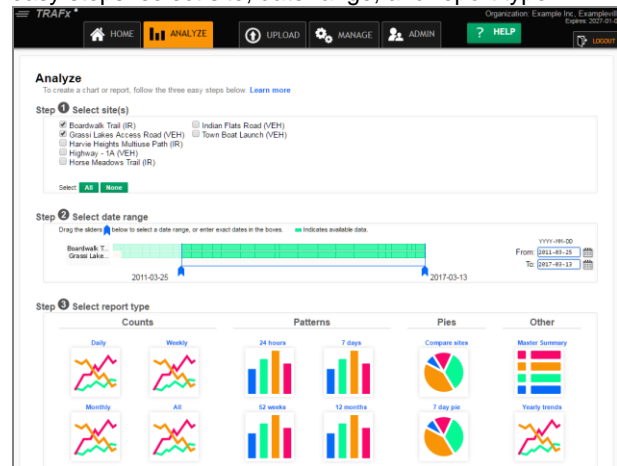


HOME – Provides an overview: counter sites, reports, photos, master summary, a map, etc. When you upload new data, HOME automatically updates.

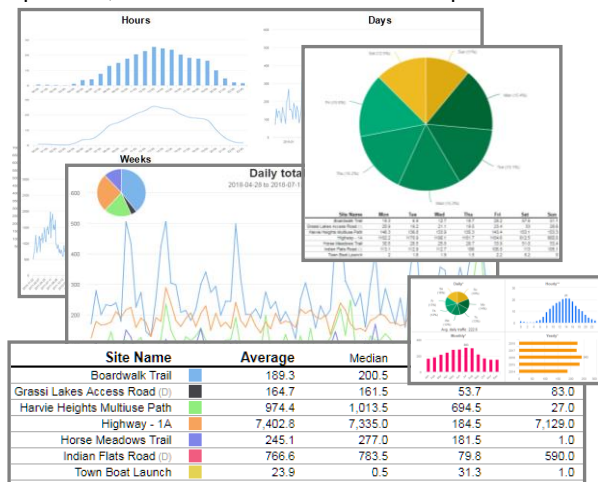


Explore by clicking around: the icons, reports, photos, map markers, etc. The single-click, instant **Master Summary** (monthly rollup) is a favorite.

ANALYZE – It is here you generate charts (i.e., graphs), reports, and totals, and, if desired, export them and their source data. Follow the three easy steps: select site, date range, and report type.



For practice, create five to seven different reports.

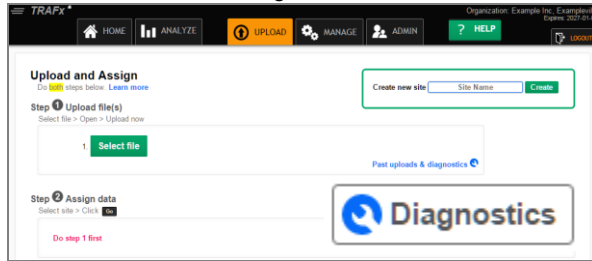


To export to Excel, just click on the Excel icon.



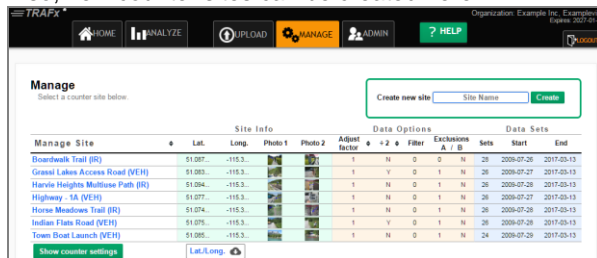
The next three menu items (UPLOAD, MANAGE and ADMIN) are used by Administrators. As a Viewer, you can “see” but you cannot “do”.

UPLOAD – This page has two steps. First, you upload a file (e.g., Shuttle File), and then you assign its data to specific counter sites. To create a new counter site use the green box.



There is also a powerful file diagnostic tool to examine uploaded data for possible problems.

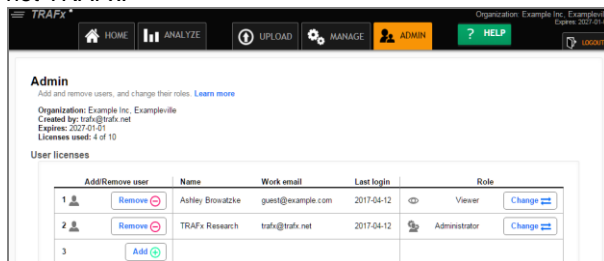
MANAGE – This is where you manage your counter sites and their associated information and settings (name, location, photos, data files, etc.). Also, new counter sites can be created here.



Click a site to manage it. You can manage:

1. Site Info (name, location, photos, etc.)
2. Data Options (adjustments, divide by 2, etc.)
3. Data Sets (move, remove, export)

ADMIN – This is where an Administrator can add (and remove) other users. Administrators are responsible for adding (or removing) other users, not TRAFx.



A new user can be added either as an **Administrator**, or a **Viewer**. Just follow the prompts. You can have multiple Administrators and multiple Viewers---this is up to you and your organization. As mentioned, Administrators have full privileges, whereas Viewers have fewer privileges.

The quick tour is now finished. For comprehensive information see DataNet’s Manual.



IMPORTANT: Although TRAFx backs up your DataNet data daily, store all your original data files in a safe place.

2 Activate

A TRAFx System Package includes a pre-paid multi-year plan for five DataNet users. DataNet’s activation code sticker is located below, in the original hardcopy manual that shipped with your TRAFx System Package.

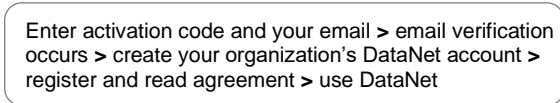


If you cannot find your original manual and/or activation code, email us proof of purchase, through our Support Hub at trafx.net/support

Activation only needs to be done once by one person in your organization. That person automatically becomes an **Administrator** and can invite (add) other users, via DataNet’s **ADMIN** tab.

DataNet’s start-date was your system package’s ship date so there is no advantage to delaying activation. Also, by activating DataNet you enjoy **Premium-level Support** (see below). Additionally, equipment tips and reminders are available in DataNet.

To activate (i.e., unlock) the plan, please go to trafx.net/datanel/activate, enter the above activation code and follow the online instructions. Here is the overall process:



DataNet includes five DataNet user licenses. Each user (i.e., person) requires a license; email/password sharing is not allowed.

Premium-level technical support

DataNet users enjoy premium-level technical support (priority email response, and support by phone) for all their TRAFx equipment (counters, dock, DataNet, etc.), with their Premium Support ID. This ID is displayed in the upper right corner of DataNet, upon log in. Have it handy when contacting us.

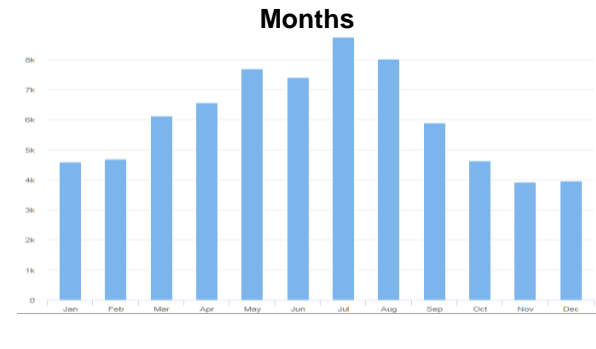
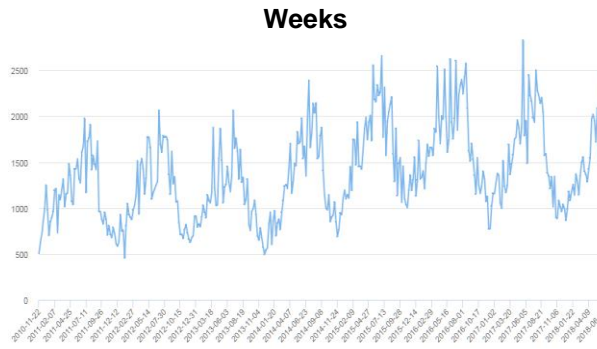
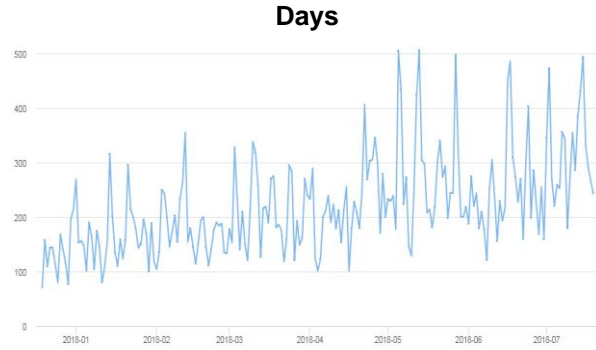
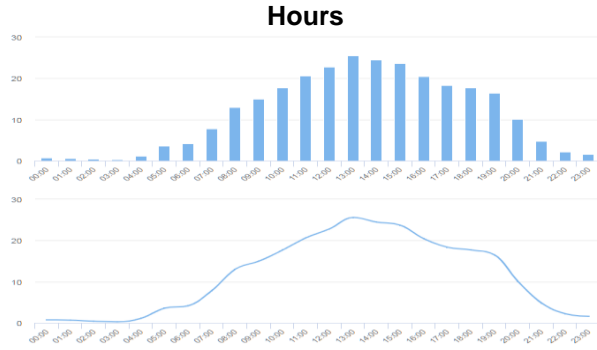


All technical support begins at our **Support Hub** at trafx.net/support



DataNet Gallery

What can DataNet do? Below are just a few examples that can be created instantly.



Monthly Totals Table (Master Summary)

Year	Site	Jan	Feb	Mar	Apr	May	Jun	Jul	Aug	Sep	Oct	Nov	Dec	ADT†	ADT†x365	Days with data
2015	Boardwalk Trail	32	0	23	205	822	1,043	1,263	1,427	1,225	1,094	667	238	22,025	8,039	365
	Grassi Lakes Access Road [□]	342	357	518	620	812	849	944	949	760	580	436	359	20,647	7,536	365
	Harvie Heights Multiuse Path	90	77	574	2,134	4,120	5,652	7,106	7,260	6,837	6,302	4,086	1,485	125,323	45,743	365
	Highway - 1A	28,891	25,958	26,538	27,957	28,034	28,049	29,811	29,758	28,832	28,355	27,176	28,782	931,893	340,141	365
	Horse Meadows Trail	0	0	54	546	1,422	1,724	1,904	2,057	1,860	1,688	1,092	344	34,770	12,691	365
	Indian Flats Road [□]	2,571	2,575	3,060	3,023	3,116	3,119	3,375	3,485	3,294	3,197	2,842	2,561	99,227	36,218	365
Town Boat Launch	0	0	0	0	18	83	209	303	268	124	5	0	2,767	1,010	365	
2016	Boardwalk Trail	57	1	27	287	837	1,212	1,558	1,467	1,442	1,253	722	292	25,014	9,155	366
	Grassi Lakes Access Road [□]	391	420	577	728	895	954	1,073	1,045	851	666	483	417	23,224	8,500	366
	Harvie Heights Multiuse Path	143	133	610	2,437	4,580	6,208	8,114	8,070	7,825	6,992	4,546	1,744	140,443	51,402	366
	Highway - 1A	30,014	28,746	30,715	29,198	30,256	29,650	30,636	32,300	30,674	29,697	29,447	30,226	987,866	361,559	366
	Horse Meadows Trail	0	0	47	498	1,333	1,584	1,943	1,908	1,786	1,575	1,030	319	32,850	12,023	366
	Indian Flats Road [□]	2,889	2,989	3,392	3,366	3,479	3,460	3,789	3,928	3,648	3,574	3,176	2,870	110,820	40,560	366
Town Boat Launch	0	0	0	0	13	103	287	318	304	150	4	0	3,221	1,179	366	
2017	Boardwalk Trail	68	1	33	340	891	1,365	1,717	1,648	1,675	1,369	830	350	28,184	10,287	365
	Grassi Lakes Access Road [□]	405	436	603	759	934	1,002	1,135	1,069	922	693	523	450	24,523	8,951	365
	Harvie Heights Multiuse Path	131	97	569	2,307	4,358	6,017	7,569	7,801	7,284	6,629	4,310	1,594	133,332	48,666	365
	Highway - 1A	33,669	30,363	34,098	32,228	33,792	32,577	34,441	36,183	33,292	33,587	32,871	33,085	1,095,847	399,984	365
	Horse Meadows Trail	0	0	60	573	1,363	1,848	2,027	2,092	2,070	1,703	1,169	351	36,318	13,256	365
	Indian Flats Road [□]	2,739	2,745	3,231	3,196	3,321	3,284	3,618	3,692	3,458	3,405	3,009	2,711	105,230	38,409	365
Town Boat Launch	0	0	0	0	7	99	262	273	279	122	4	0	2,866	1,046	365	

Compare multiple counters or different days of the week

