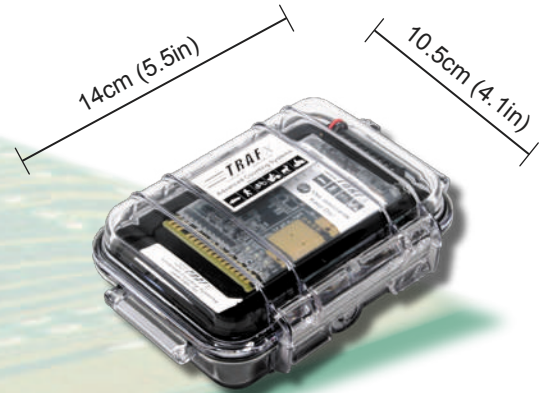


## Key Info

- For off-highway vehicles (ATVs, quads, dirt bikes, etc.)
- Advanced microelectronic design
- Self-contained design; no external wires or tubes
- Designed to be buried
- Small and easy to hide — reduces vandalism risk
- Long battery life (up to 9 months)
- Large storage capacity (millions of counts)
- Built for outside: -40C (-40F) to +55C (131F)
- Low installation, operating, and maintenance costs
- Field-proven, Generation 4 design (>10 year history)

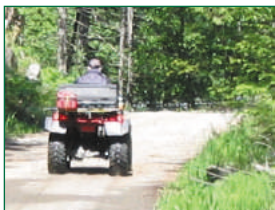


### Compact, Unobtrusive Design

The TRAFx OHV Counter detects and counts off-highway vehicles such as ATVs, quads, motorcycles, jeeps, 4x4s, etc. It is the first, and currently the only OHV counter available. Because the counter is small (about the size of a bar of soap), it is easy to deploy and hide. It is designed to be buried and left unattended in the field for long periods. It can also be mounted under a bridge, or hidden under a log or rock at the trailside.

### Easy to Deploy

Each TRAFx OHV Counter combines an aerospace-quality magnetometer with advanced embedded processing software to produce a state-of-the-art, small, battery-efficient, easy to hide and deploy counter built for the outdoor environment. It uses three standard "C size" alkaline batteries.



## TRAFx Counting System

### TRAFx Dock

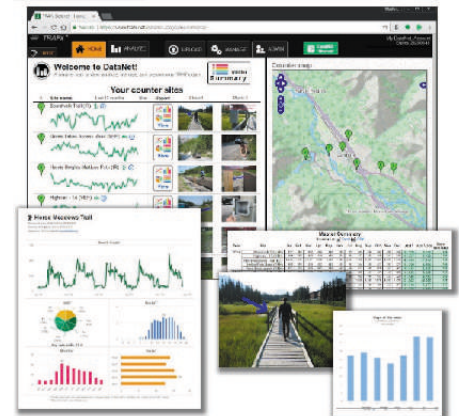
To download counters in the field (without PC)

To configure counters (with PC)



### TRAFx DataNet

To view and manage your data

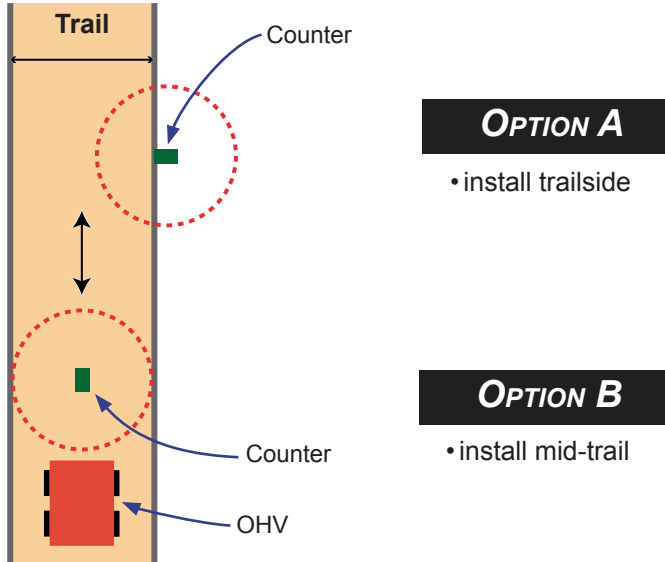


To produce professional reports in seconds.



Try the free Demo at [www.trafx.net](http://www.trafx.net)

(Bird's eye view)



- Detection range, as shown below, is primarily a function of vehicle size.  
Dirt bikes (and snowmachines) = 1 to 2m (3.3 to 6ft)  
Quads = 2 to 3m (6.6 to 10ft)  
Highway vehicles (e.g., jeeps) = up to 6m (20ft)
- To detect both smaller OHVs (e.g., quads) and larger OHVs (e.g., jeeps), install the counter within range of the smaller vehicle type (i.e., quads).
- The detection zone extends out in all directions from the counter, whether the counter is placed above or below ground.
- If only a portion of an OHV enters the detection zone, it will be detected.



## FEATURES

- Hourly or daily totals, or timestamps  
-14 000 hourly or daily totals = > 400 million counts  
-14 000 timestamps
- Flexible installation options (see above)
- Proprietary design for detecting small vehicles
- User programmable modes/settings  
-Programmable settings include:  
\*Real-time clock \*Start date/time  
\*Detection range \*Digital sampling parameters  
\*Delay after event \*Site/counter name
- Three colour-coded LEDs indicate status of operation  
-green light flashes upon detection
- Digital readout of battery voltage level (e.g., 4.2V)
- Automatic low battery warning
- User replaceable parts
- Engineered and built in the Canadian Rockies

## SPECIFICATIONS

CASE: 14cm x 10.5cm x 5cm (5.5in x 4.1in x 2in); weatherproof  
WEIGHT: 250g (8.8oz) (without batteries)  
POWER: Three "C size" alkaline batteries (e.g., Energizer)  
BATTERY LIFE: 8 to 9 months max. with three C alkalines  
20 months max. with one D lithium (custom.)  
DETECTION RANGE: see box above  
DATA TYPE: ASCII; .txt file type  
DIGITAL MEMORY DESIGN: Data and settings are retained even when batteries are replaced or die  
TIME KEEPING: Quartz clock; 10ppm accuracy @ 20C  
OPERATING TEMPERATURE: -40C (-40F) to +55C (131F)  
SENSOR TYPE: Low-field geomagnetic  
COMMUNICATIONS: RS232 serial; 115,000 baud  
OTHER: Gold-plated circuitboard; two coats silicon (anti-moisture); ESD protection and short circuit protection; RoHS (lead-free)  
LIMITED WARRANTY: 1 year; covers manufacturing defects.  
EMI COMPLIANCE: FCC, IC, CE

## TRAFx VERSATILITY

The TRAFx OHV Counter comes pre-programmed and ready to use as the TRAFx Vehicle Counter or the TRAFx Mountain Bike Counter, at no extra charge. Simply change the mode when configuring the counter. Also, it can be quickly and easily converted to the TRAFx Infrared Trail Counter by ordering a special conversion kit.

Visit [www.trafx.net](http://www.trafx.net) for details.

## ACCESSORIES/OPTIONS

- LCD tally display
- Extended 5-year warranty
- IR conversion kit

## TRAFx Research Ltd.

6A Riverstone Road, Canmore, Alberta, Canada T1W 1J5

T: (403) 678 1802 F: (403) 451-1561

E: [info@trafx.net](mailto:info@trafx.net) [www.trafx.net](http://www.trafx.net)

