

How to reset the LCD tally display

v170601

Special order TRAFx counters have 6 digit LCD tally displays. These are installed at our factory before shipping.

External LCD display features



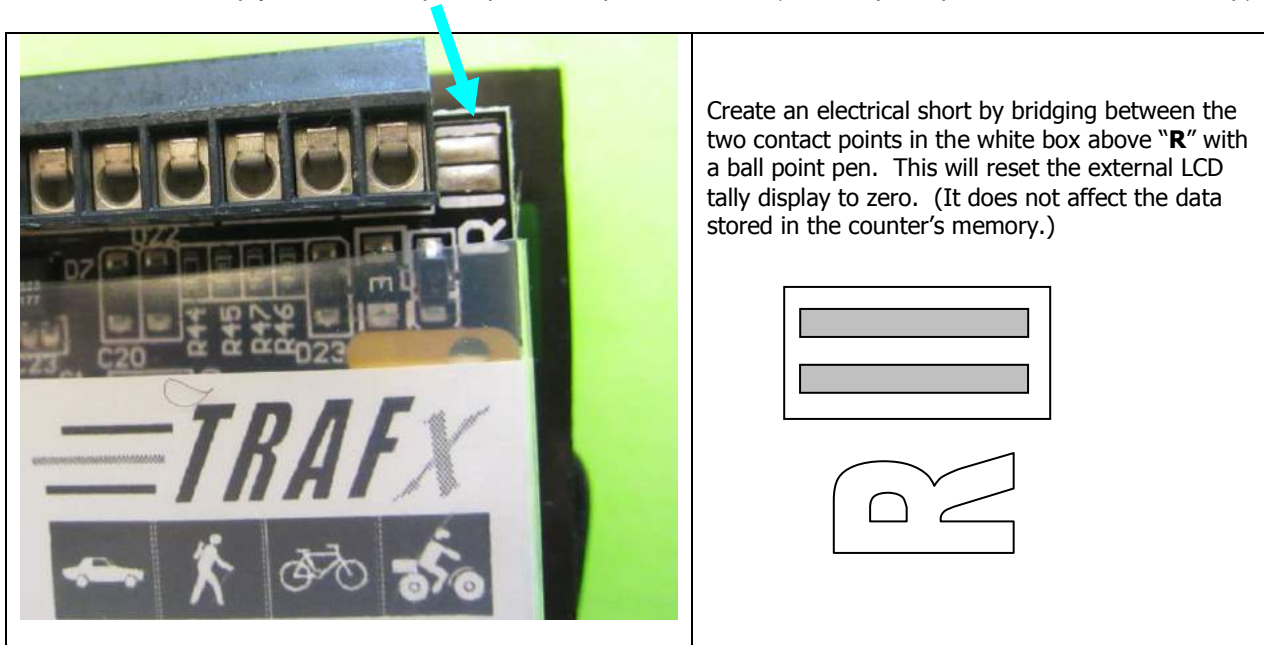
- 6-digit
- 0 to 999999 count range
- rollover to 0 when full
- negligible impact on battery life
- the LCD is independent of the counter's internal digital memory (that is, if you enter "E" for erase, the LCD is not affected).

How to reset the LCD display to zero

Note: Only reset the display to zero if you absolutely need to. When checking the counter's LCD display, it is easier and safer to just write down the total shown each time, rather than resetting the LCD display to zero.

However, if you need to reset the counter's LCD display to zero, this is how to do it:

In the upper right hand corner of the counter's circuitboard, is a simple, long-lasting, non-mechanical switch. To use the switch simply insert a ball point pen as explained below (the ball point pen must have a metal tip).



Other notes:

- If the counter's batteries are removed, both the counter and its LCD will not have battery power, and the LCD will show zero upon re-inserting batteries (you'd also need to re-launch the counter if you remove batteries as the counter's clock will stop).
- The location of the reset switch is slightly lower in G2 and some G3 counters than that shown above. However, it functions exactly the same way.